

Leica DS2000 – IP Address Set Up

When connection between the CT2000 Tablet and Radar unit keeps failing there may be a conflict with the IP addresses. Please see below on how to change the IP address for the Radar.

Open the “**Windows Start Menu**” and select “**Control Panel**”

Select “**Network and Internet**” and then Select “**Network Connections**”.

On “**Local Area Connection**” (see the image below) right click and select “**Properties**”.

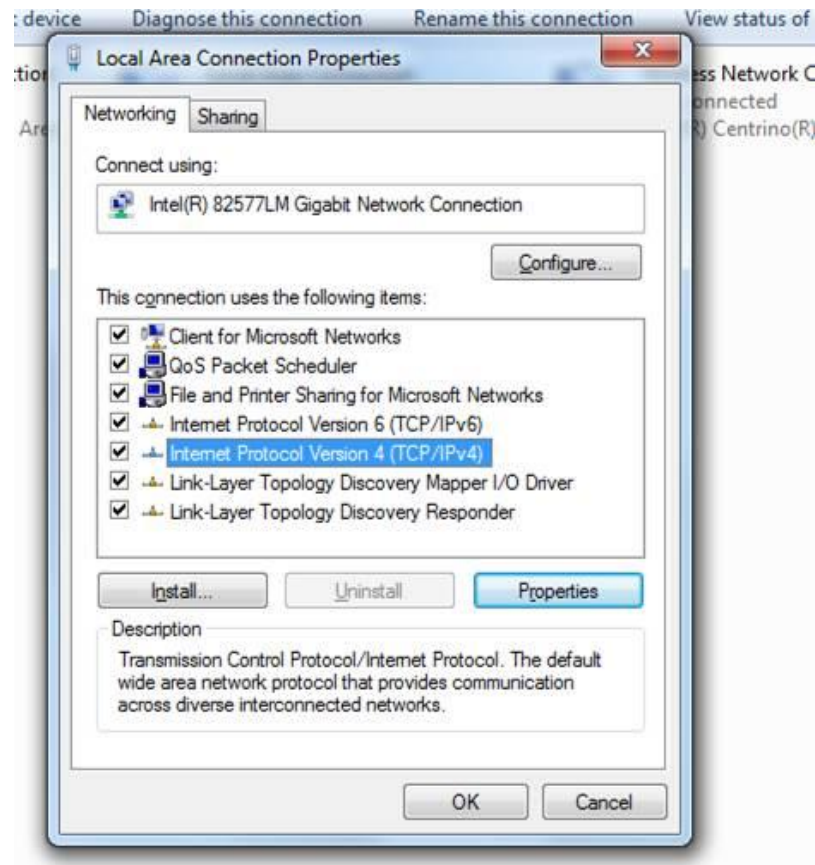


Sunbelt Rentals Survey

3 Orpheus House, Calleva Park, Aldermaston, Reading, RG7 8TA. 0330 678 0181 Support Number: 01293 565565
sales@sunbeltsurvey.co.uk www.sunbeltsurvey.co.uk

Registered Office: Sunbelt Rentals Ltd. 100 Cheapside, London EC2V 6DT. Registered No. 444569 England & Wales

The select the following TCPIP “**Internet Protocol Version 4 (TCP/IPv4)**” and select “**Properties**”

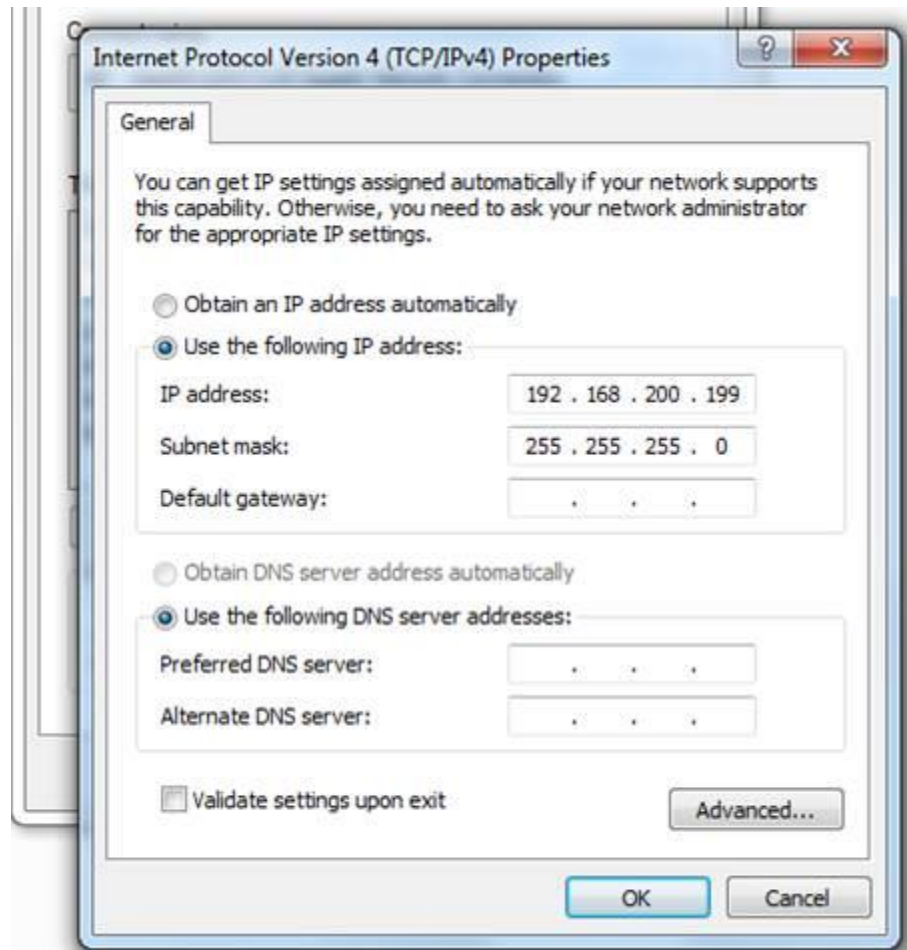


Sunbelt Rentals Survey

3 Orpheus House, Calleva Park, Aldermaston, Reading, RG7 8TA. 0330 678 0181 Support Number: 01293 565565
sales@sunbeltsurvey.co.uk www.sunbeltsurvey.co.uk

Registered Office: Sunbelt Rentals Ltd. 100 Cheapside, London EC2V 6DT. Registered No. 444569 England & Wales

Then in the field “**IP address:**” write the same IP address as in the picture below.



Then try to reconnect the CT2000 and Radar Unit through Overture/Unext using a “**New Project**”.

Sunbelt Rentals Survey

3 Orpheus House, Calleva Park, Aldermaston, Reading, RG7 8TA. 0330 678 0181 Support Number: 01293 565565
sales@sunbeltsurvey.co.uk www.sunbeltsurvey.co.uk

Registered Office: Sunbelt Rentals Ltd. 100 Cheapside, London EC2V 6DT. Registered No. 444569 England & Wales