

Leica ScanStation Pxx

Remote Control Manual for Leica CS20 Controller

The *ScanStation Pxx Remote Control for CS20* application is intended for controlling the *Leica ScanStation Pxx* remotely by a *Leica CS20 Controller* via WiFi.

On the *Leica ScanStation Pxx*, which should be controlled remotely, the firmware version 2.50 or higher has to be installed. The remote control will not work with former firmware versions.

The following hardware is needed:

- *Leica Controller CS20*.
- *Leica ScanStation Pxx* laser scanner

Installation of the ScanStation Pxx Remote Control for CS20 Application on the Leica CS20 Controller

- Copy the installation file “CS20_ScanStation_Pxx_RemoteControl.CAB” onto a USB memory device.
- Switch on the *Leica CS20 Controller* and connect the USB memory device to the controller.



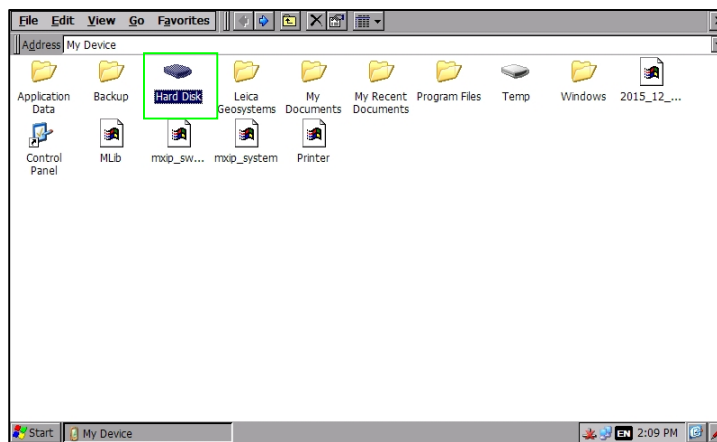
- If the *Leica Captivate* application is running, close this application by pressing “Fn” → “Exit”.



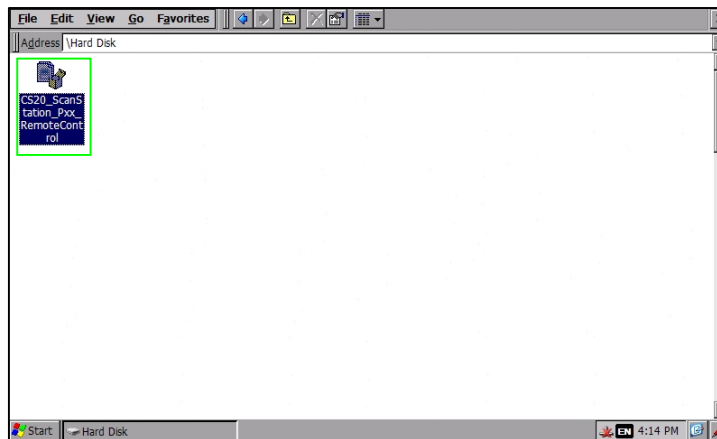
- Double-click “My Device”.



- Navigate to the USB memory device.



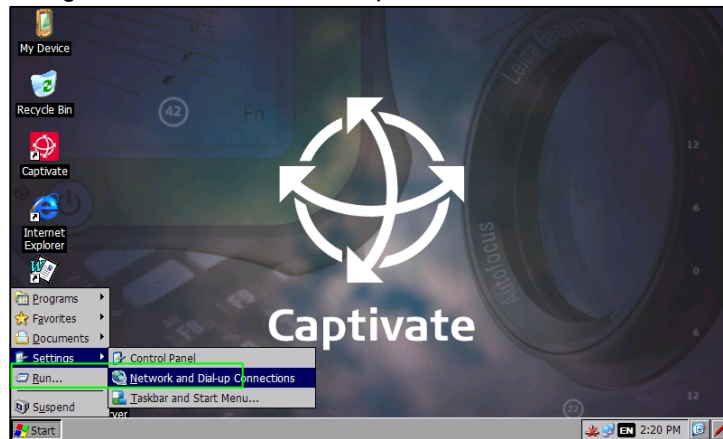
- Double-click the file “CS20_ScanStation_Pxx_RemoteControl.CAB”.



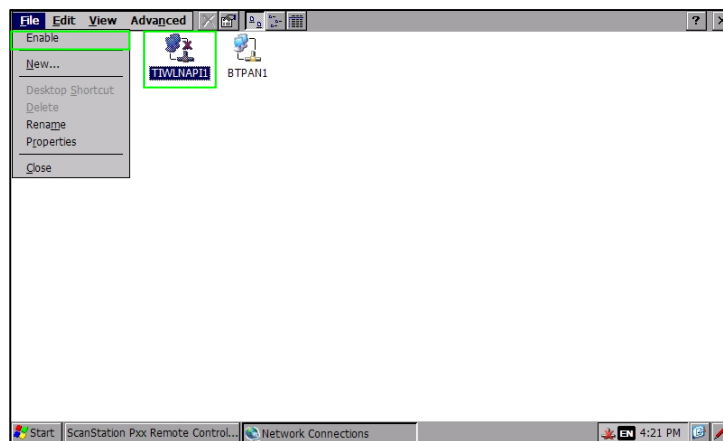
- The application will be installed. A start-up menu folder in “Start, Programs, ScanStation Pxx RemoteControl” will be created.
After installing the *CS20_ScanStation_Pxx_RemoteControl* application the setup file “Pxx_RemoteControl.CAB” will be automatically removed from the USB memory device.
- Disconnect the USB memory device.

Enable the WiFi adapter of your Leica Viva Controller

- Go to “Start” → “Settings” → “Network and Dial-up Connections”.

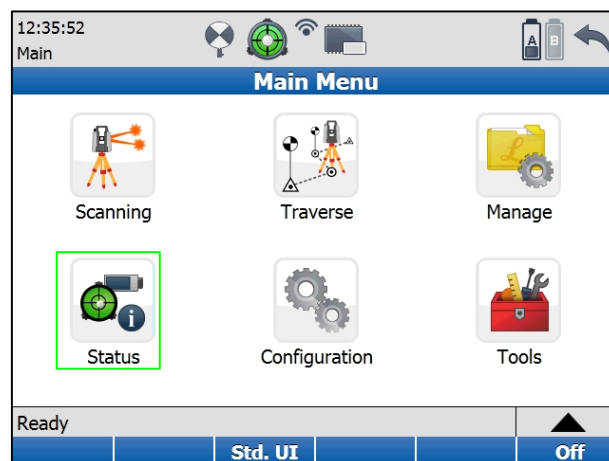


- Select the icon of the WiFi device (e. g. “TIWLNAPI1”) and press “File”.
- If the menu lists “Disable”, the WiFi device is already enabled.
In this case leave the control panel without any changes.
- If the menu lists “Enable”, press “Enable” and leave the Control Panel.

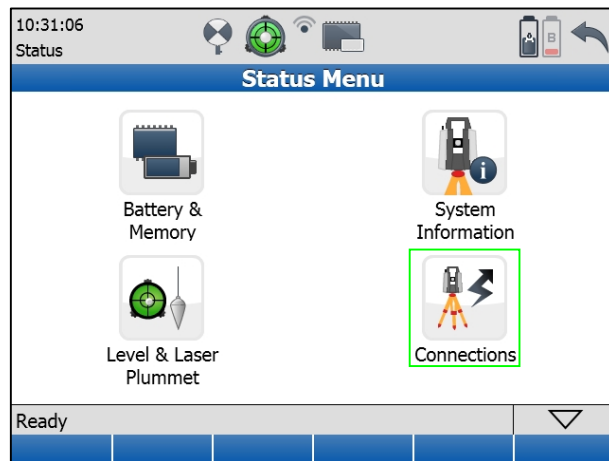


Leica ScanStation Pxx Remote Control

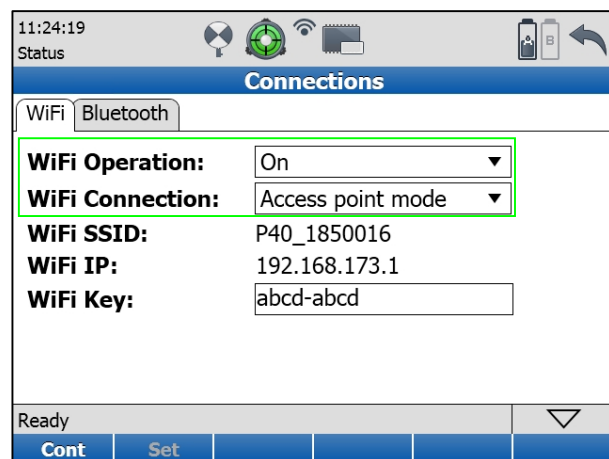
- Switch on the *Leica ScanStation Pxx* and wait for the boot process to finish.
- Select “Status” to get to the “Status Menu”.



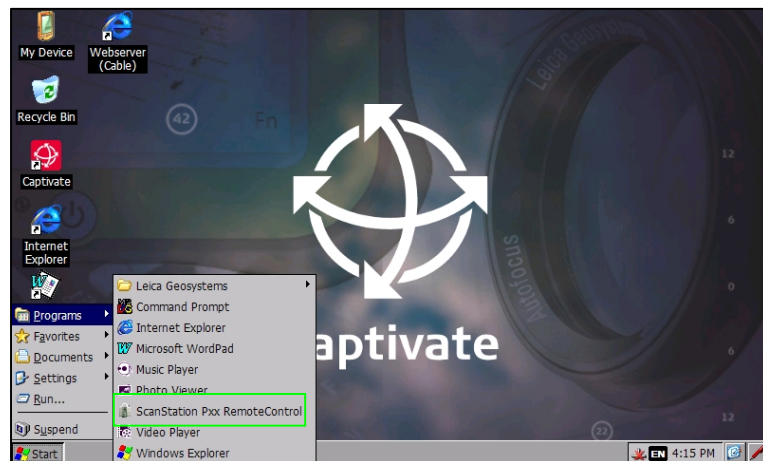
- In the “Status Menu” select “Connections” to open the “WiFi Configuration” menu.



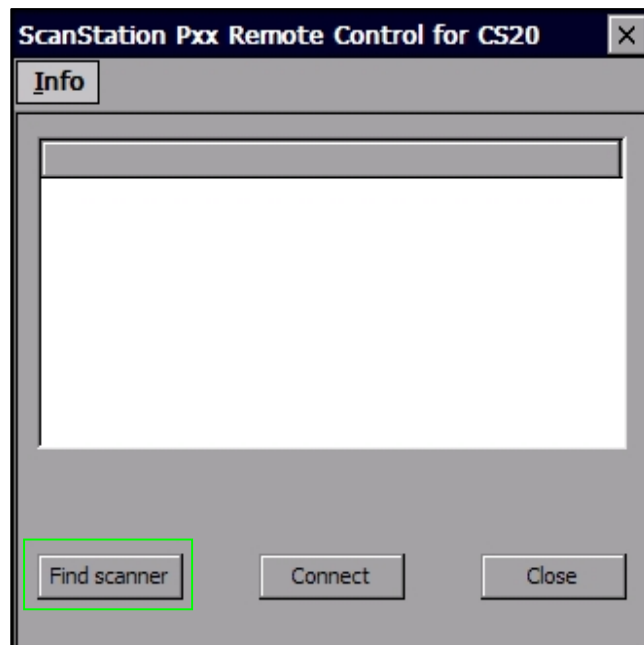
- In the “WiFi Configuration” menu set:
 - WiFi Operation = On
 - WiFi Connection = Access point mode



- Start the *ScanStation Pxx Remote Control for CS20* application on your *Leica CS20 Controller* by selecting “Start, Programs, ScanStation Pxx Remote Control”.



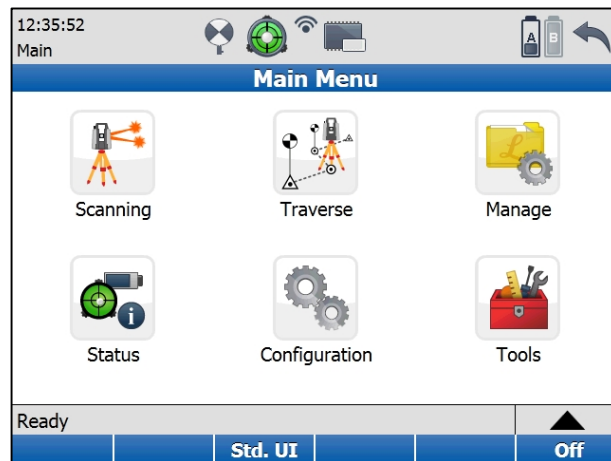
- Within the “ScanStation Pxx Remote Control for CS20” dialog press “Find scanner” and wait for your *Leica ScanStation Pxx* to be listed within the list of available scanners.




- As soon as your *Leica ScanStation Pxx* is listed, select it and press “Connect”.



- Wait until the *Leica ScanStation Pxx* onboard control is displayed on your *Leica CS20 Controller*.



- Close the “Leica Pxx WiFi...” window as well as the “ScanStation Pxx Remote Control for CS20” dialog by pressing  of the appropriate dialog.

General Remark

- The USB port of the *Leica Viva Controller* will not replace the USB port of the *Leica ScanStation Pxx* while you are connected to the scanner.
In order to download scanning projects, upload control point files, or system files you always have to use the USB port of the *Leica ScanStation Pxx*.