

## Leica ScanStation Pxx Remote Control Manual

The *Pxx Remote Control* application is intended for controlling the *Leica ScanStation Pxx* remotely by a *Leica Viva Controller* via WiFi.

On the *Leica ScanStation Pxx*, which should be controlled remotely, the firmware version 2.0 has to be installed. The remote control will not work with former firmware versions.

The following hardware is needed:

- *Leica Viva Controller* (CS10 or CS15) equipped with a WiFi adapter.  
Check the sticker “This device contains...” in the battery compartment of the *Leica Viva Controller*.  
In case a WLAN module is listed, the controller is equipped with a WiFi adapter.
- *Leica ScanStation Pxx* laser scanner

### Installation of the Pxx Remote Control Application on the Leica Viva Controller

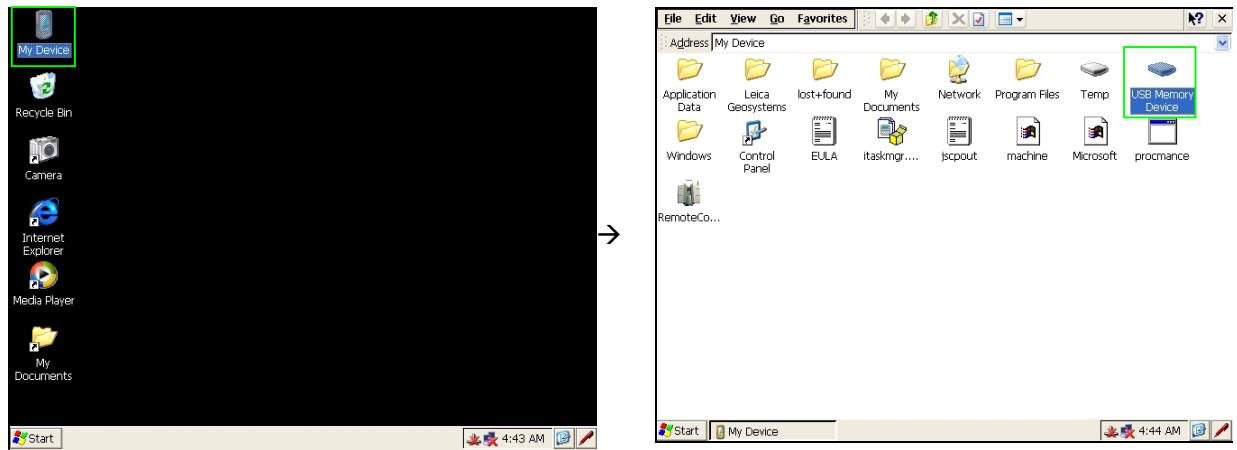
- Copy the installation file “Pxx\_RemoteControl.CAB” onto a USB memory device.
- Switch on the *Leica Viva Controller* and connect the USB memory device to the controller.



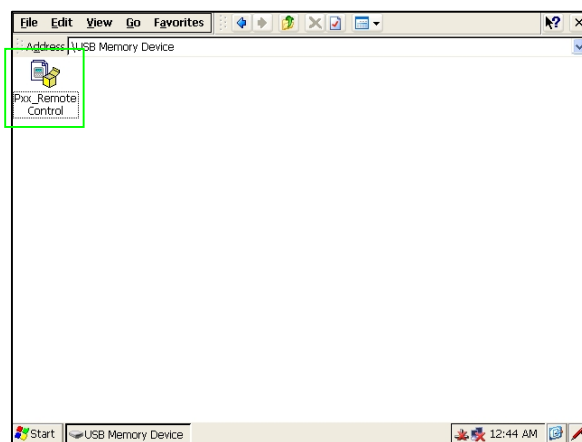
- If the *Leica SmartWorx Viva* application is running, close this application by pressing “Fn” → “Exit”.



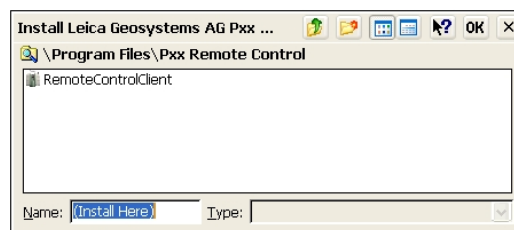
- Double-click “My Device” and navigate to the USB memory device.



- Double-click the file “Pxx\_RemoteControl.CAB”.



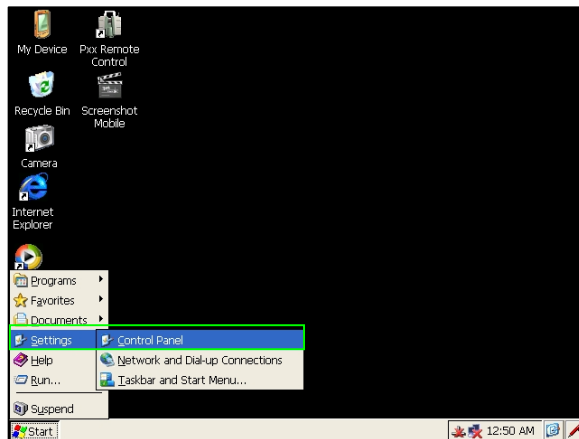
- Confirm the suggested installation folder “Program Files” by pressing “OK” within the “Install Leica Geosystems AG Pxx ...” dialog.



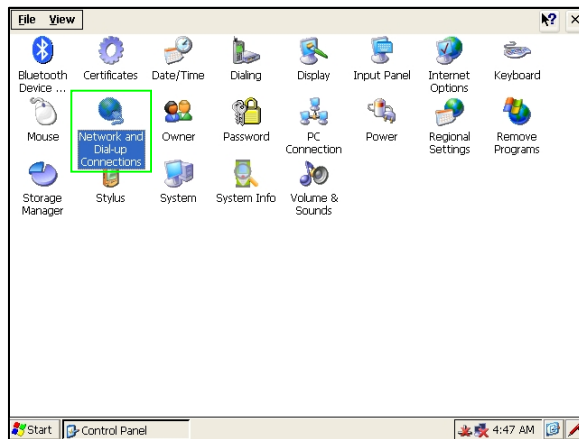
- The application will be installed. A start-up menu folder as well as a desktop icon will be created. After installing the *Pxx Remote Control* application the setup file “Pxx\_RemoteControl.CAB” will be automatically removed from the USB memory device.
- Disconnect the USB memory device.

## Enable the WiFi adapter of your Leica Viva Controller

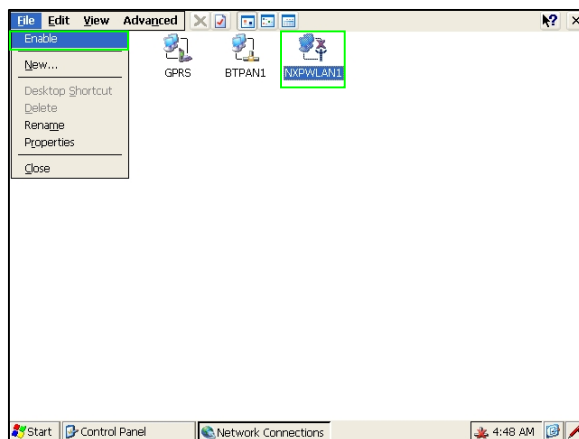
- Go to “Start” → “Settings” → “Control Panel”.



- Double-click on “Network and Dial-up Connections”.

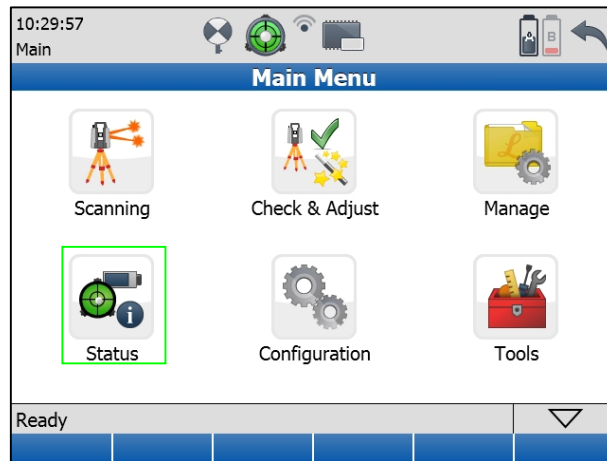


- Select the icon of the WiFi device (e. g. “NXPWLAN1”) and press “File”.
- If the menu lists “Disable”, the WiFi device is already enabled.  
In this case leave the control panel without any changes.
- If the menu lists “Enable”, press “Enable” and leave the Control Panel.

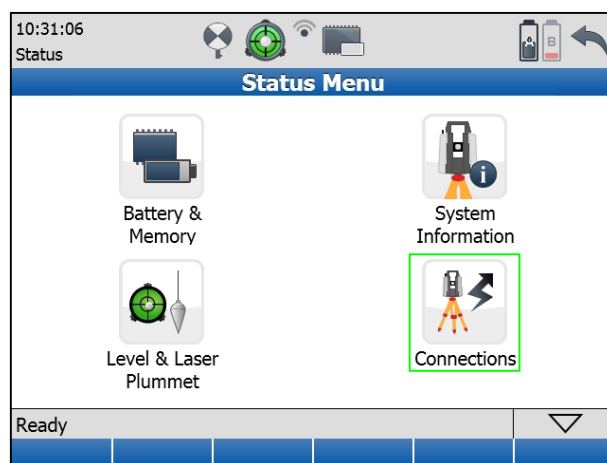


## Leica ScanStation Pxx Remote Control

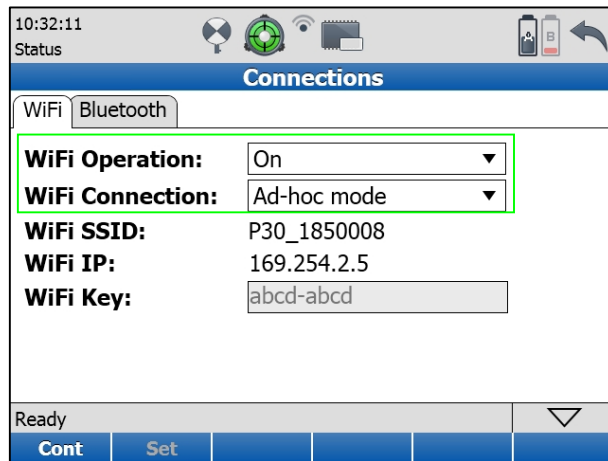
- Switch on the *Leica ScanStation Pxx* and wait for the boot process to finish.
- Select “Status” to get to the “Status Menu”.



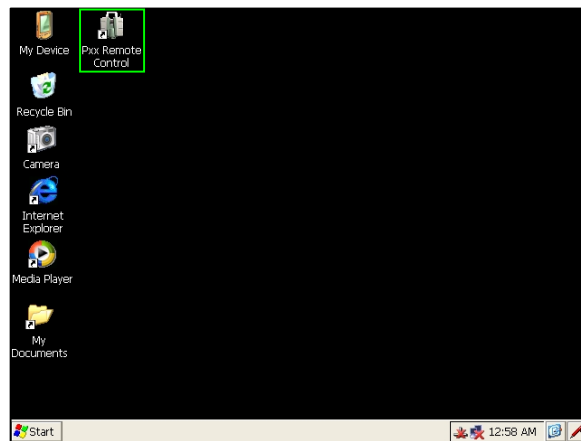
- In the “Status Menu” select “Connections” to open the “WiFi Configuration” menu.



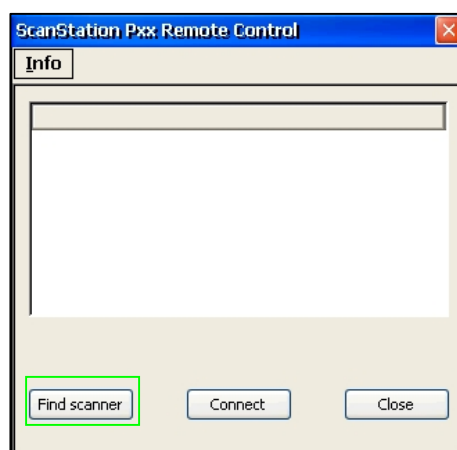
- In the “WiFi Configuration” menu set:
  - WiFi Operation = Enabled
  - WiFi Connection = Ad-hoc mode



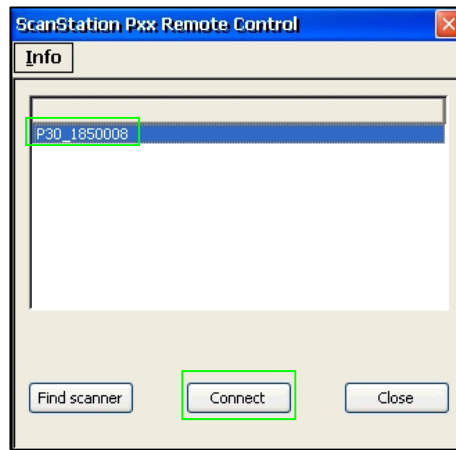
- Start the *Pxx Remote Control* application on your *Leica Viva Controller* by double-clicking the “Pxx Remote Control” desktop icon.



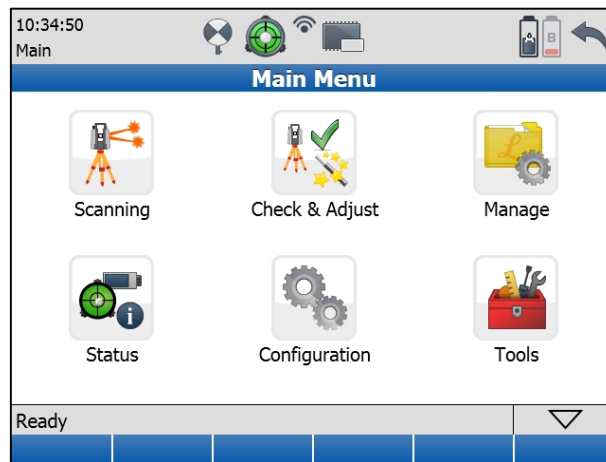
- Within the “ScanStation Pxx Remote Control” dialog press “Find scanner” and wait for your *Leica ScanStation Pxx* to be listed within the list of available scanners.



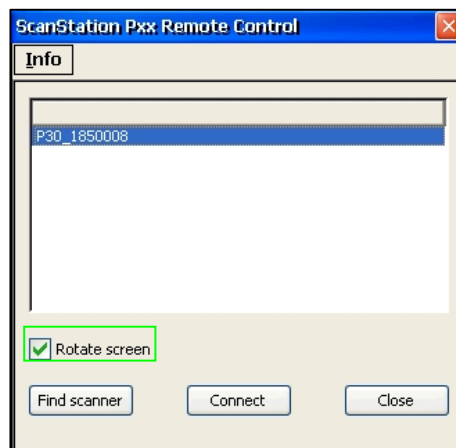
- As soon as your *Leica ScanStation Pxx* is listed, select it and press “Connect”.




- Wait until the *Leica ScanStation Pxx* onboard control is displayed on your *Leica Viva Controller*.



☞ Since the *Leica Viva Controller CS10* has a screen in upright format, the *Pxx Remote Control* application offers the option to rotate the onboard control by 90° on the controller's screen. In order to activate the 90°-rotation, select "Rotate screen".



This option is not available on the *Leica Viva Controller CS15*.

- Close the "Leica Pxx WiFi..." window as well as the "ScanStation Pxx Remote Control" dialog by pressing  of the appropriate dialog.

## General Remark

- The USB port of the *Leica Viva Controller* will not replace the USB port of the *Leica ScanStation Pxx* while you are connected to the scanner.  
In order to download scanning projects, upload control point files, or system files you always have to use the USB port of the *Leica ScanStation Pxx*.