



# Leica ScanStation Pxx

## Remote Control via Apple iPad

v2.0

- when it has to be **right**

**Leica**  
Geosystems

# Leica ScanStation Pxx

## Remote Control via Apple iPad

### Prerequisite



- Leica ScanStation Pxx with FW 2.0 or higher installed
- Apple iPad running on iOS 5 or iOS 6 and with free app RDP Lite installed
- No additional external hardware needed

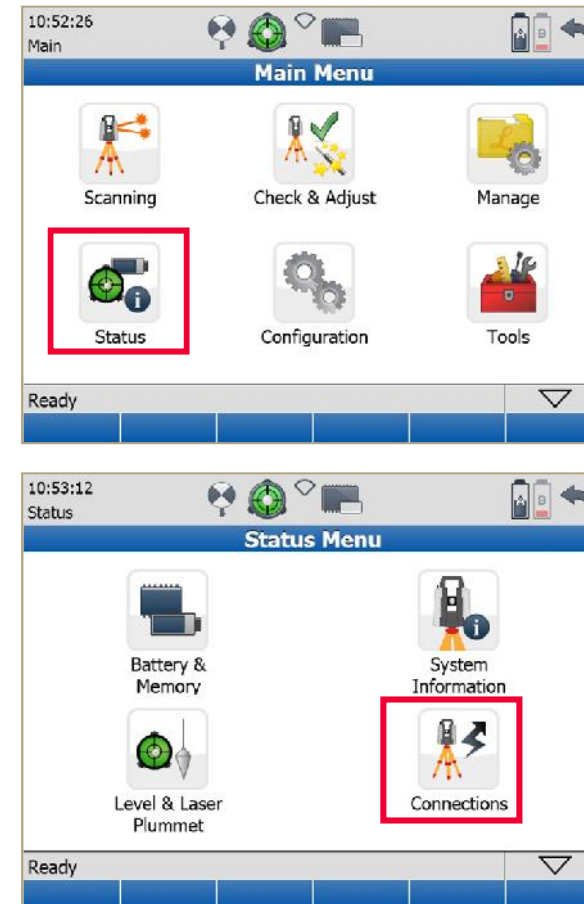


# Leica ScanStation Pxx

## Remote Control via Apple iPad

Select WiFi settings on scanner



- Start the Leica ScanStation Pxx and wait for the boot process to finish.
- Select  **Status** to get to the **Status Menu**.
- In the **Status Menu** select  **Connections** to open the **WiFi Configuration** menu.

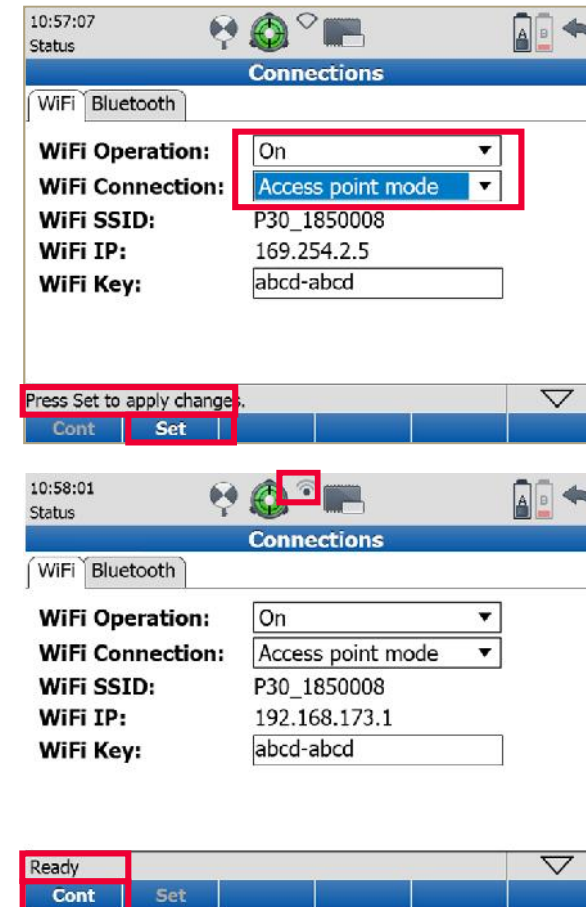


# Leica ScanStation Pxx

## Remote Control via Apple iPad

Select WiFi settings on scanner cont'd

- In the **Wifi Configuration** menu set
  - WiFi Operation = On
  - WiFi Connection = Access point mode
- Press **Set** to confirm these settings. Wait for the information line to change from **Enabling WiFi...** to **Ready**.
- Check that the WiFi icon in the status bar changed from off  to on .
- Press **Cont** to return to the **Status Menu**.



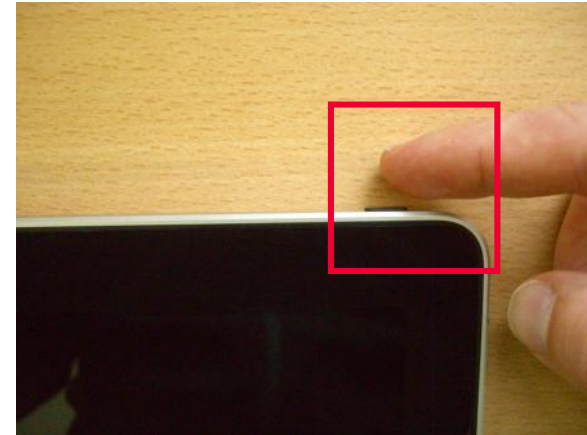
- when it has to be right

# Leica ScanStation Pxx

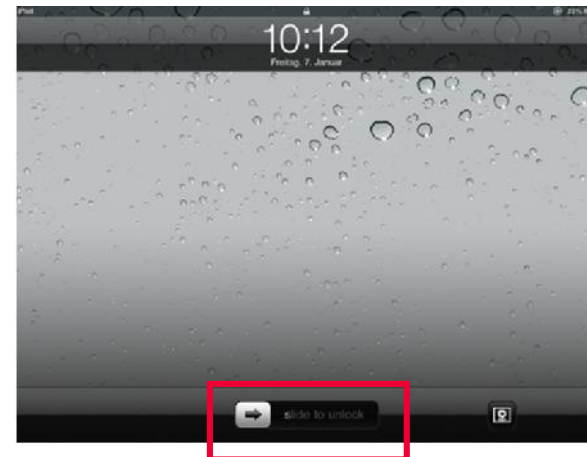
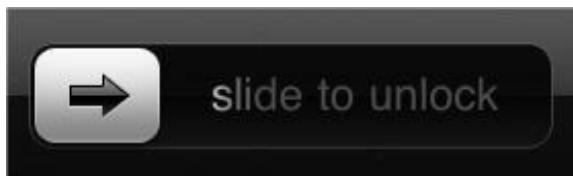
## Remote Control via Apple iPad

### Start the iPad

- Start the Apple iPad by pressing the ON/Off button



- Unlock the system



# Leica ScanStation Pxx

## Remote Control via Apple iPad

Select WiFi settings on iPad

- Select **Settings** to define the correct WiFi settings.





# Leica ScanStation Pxx

## Remote Control via Apple iPad

Select WiFi settings on iPad  
cont'd

- In **Settings**, **WiFi** select the network **P30 185xxxx** with 185xxxx being the scanner's serial number.



# Leica ScanStation Pxx

## Remote Control via Apple iPad

Select WiFi settings on iPad  
cont'd

- The details of this network should be as listed in the screenshot.



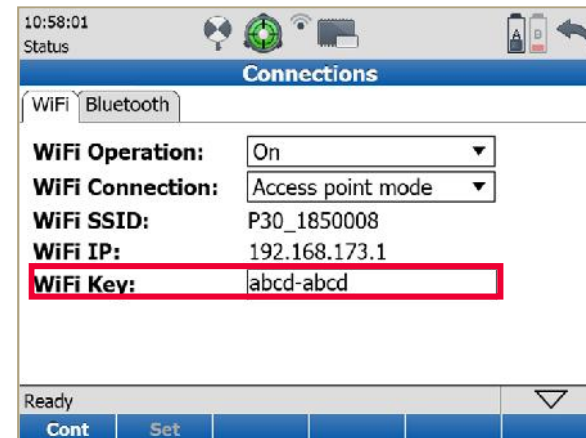
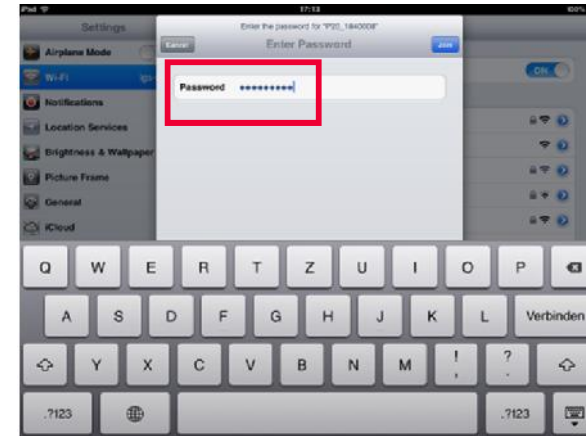


# Leica ScanStation Pxx

## Remote Control via Apple iPad

Select WiFi settings on iPad  
cont'd

- Enter the password of the scanner when connecting to this network for the first time.
- The default password is:
  - abcd-abcd



# Leica ScanStation Pxx

## Remote Control via Apple iPad

### Initialize RDP Lite

- Install the free app **Remote Desktop Lite (RDP Lite)**.
- It provides access to a PC running Windows XP Professional or Vista/Windows 7.
- In the App Store search for „rdp lite“ to find it.
- [www.mochasoft.dk](http://www.mochasoft.dk)



# Leica ScanStation Pxx

## Remote Control via Apple iPad

### Initialize RDP Lite cont'd

- Start the free app **RDP Lite**

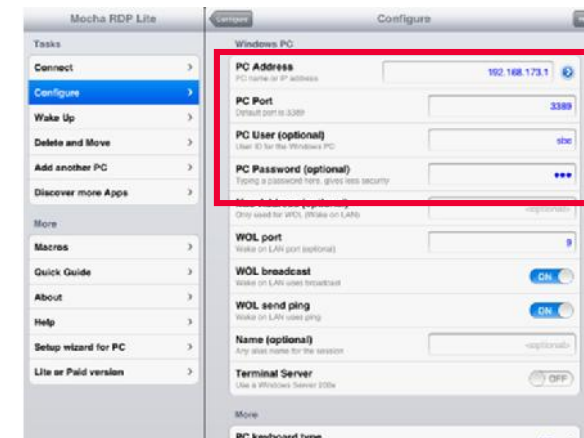
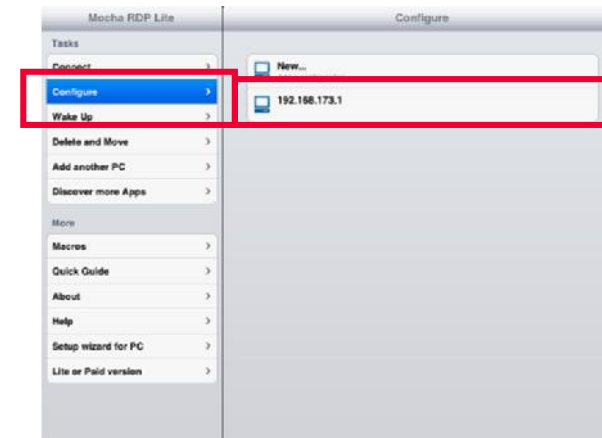


# Leica ScanStation Pxx

## Remote Control via Apple iPad

### Initialize RDP Lite cont'd

- In Mocha RDP Lite select **Configure** and go to **Edit Connections**.
- In the configuration list create a connection with
  - Windows Workstation IP address = 192.168.173.1
  - Windows Workstation Port = 3389
  - User (optional) = sbc
  - Password (optional) = sbc

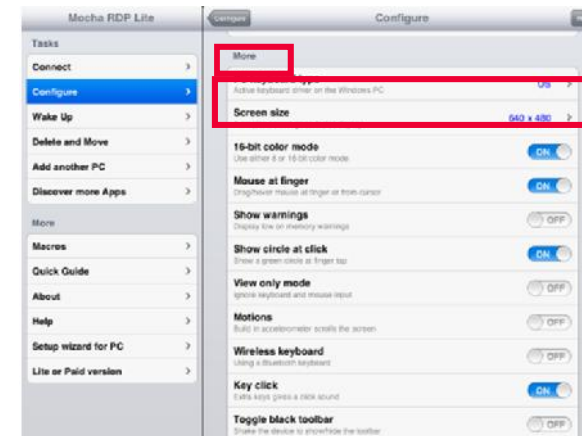


# Leica ScanStation Pxx

## Remote Control via Apple iPad

### Initialize RDP Lite cont'd

- Scroll down to the **More** list and select **Screen Size**.
- In **PC screen size** select customize size with
  - Screen width = 640
  - Screen height = 480

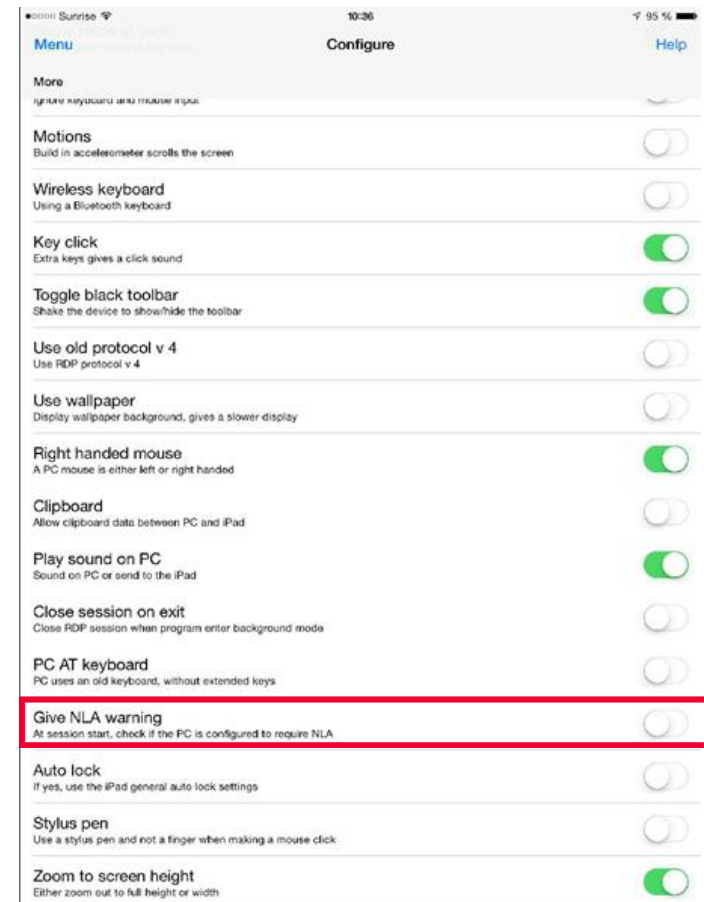


# Leica ScanStation Pxx

## Remote Control via Apple iPad

### Initialize RDP Lite cont'd

- Scroll down to the **More** list and disable **Give NLA warning**.



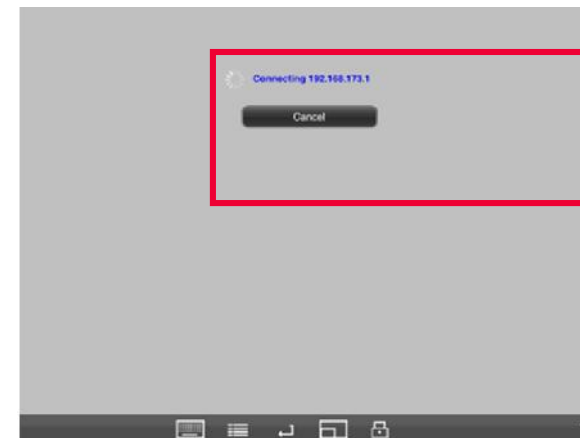
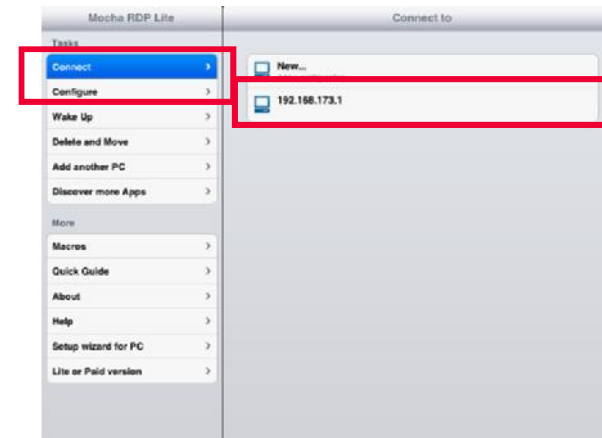


# Leica ScanStation Pxx

## Remote Control via Apple iPad

### Initialize RDP Lite cont'd



- In **Mocha RDP Lite** select **Connect** and select the connection to the scanner.
- RDP Lite will establish a remote connection on your iPad to the scanner.

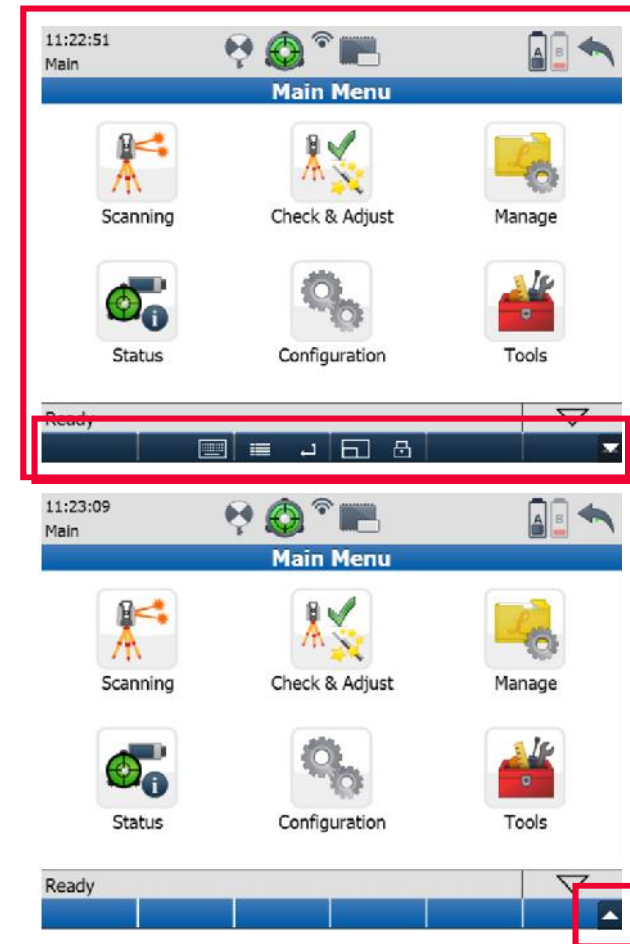


# Leica ScanStation Pxx

## Remote Control via Apple iPad

### Use Pxx MMI remotely

- After some seconds the entire ScanStation Pxx window with the active MMI is displayed and the WiFi icon in the status bar changed to .
- Use the icon  to minimize the RDP control bar and get full access to the ScanStation Pxx interface.
- The Pxx is now ready for remote control via iPad touchscreen (the little green dot represents your point of selection).

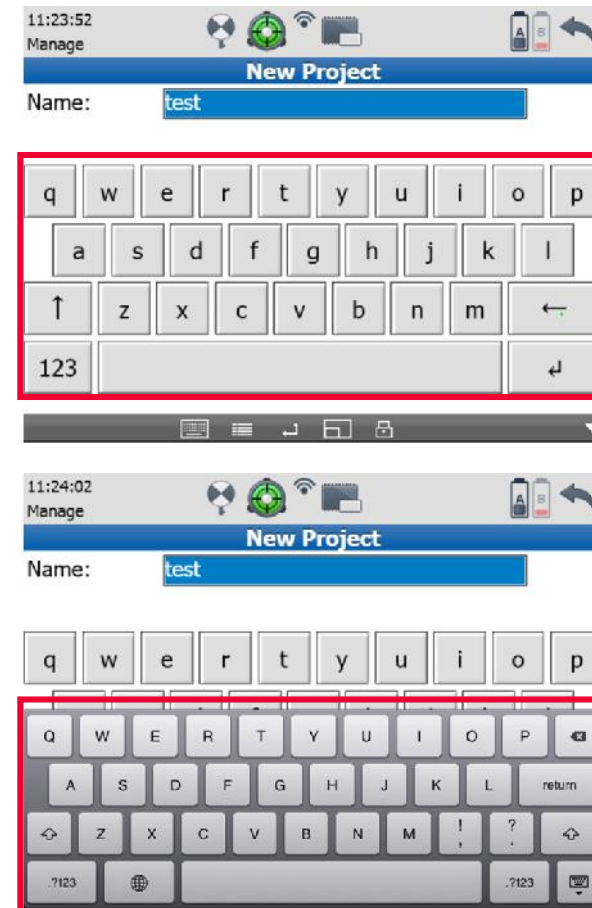


# Leica ScanStation Pxx

## Remote Control via Apple iPad

Use P20 MMI remotely cont'd

- When numeric/alphanumeric MMI input fields are selected
  - the default MMI virtual keyboard can be used or
  - the iPad virtual keyboard can be used by pressing



# Leica ScanStation Pxx

## Remote Control via Apple iPad

### RDP Lite and Apple iPhone

- The app Remote Desktop Lite (RDP Lite) also works on the Apple iPhone.



- Hence this combination can also be used to control the Leica ScanStation Pxx remotely.

# Leica ScanStation Pxx

## Remote Control via Apple iPad

### Full version of RDP

- Purchase the full version of RDP for full feature support



- E.g. lock the screen so that finger moving over the screen is now mouse dragging (for fence or pan command)

